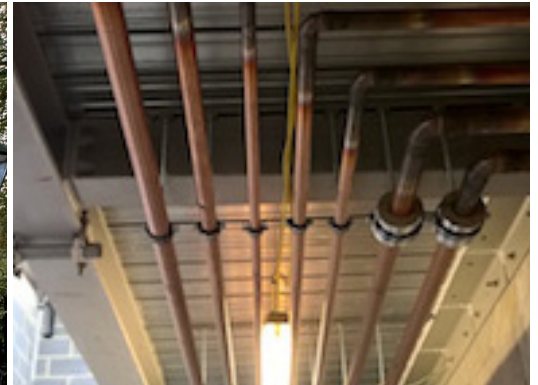


The Glebe - London



The Glebe is a prestigious project in the heart of London's Chelsea district. It will encompass the transformation of an old school built over 100 years ago.

Project Profile

The Glebe is a prestigious project in the heart of London's Chelsea district. It will encompass the transformation of an old school built over 100 years ago. Whilst the existing brick facades will be maintained and restored the school will include extensive remodeling and extensions into seven luxury dwellings and two villas. The high-end development is estimated to be up to the value of £300m, with the two villas expected to fetch around £35m each.

Premier Service Installations were appointed to deliver the heating and chilled services and chose Peglers' traditional Endex and Endbraz capillary fittings to support a high-end quality installation. Endex end feed fittings are light and compact and make handling and installations of copper tubing easy. In addition, and key to the installation, is the fittings smooth lines which minimize flow restrictions. Endex was used for smaller jointing from 6mm to 54mm where Endbraz was used for joints from 67mm to 159mm. Both are covered with Peglers' 25 year guarantee which demonstrates the company's total confidence in the products.

Location

London

Applications

Domestic Heating and Cooling
Hot and Cold Water Services

Product used

Endex
Yorkshire Capillary Fittings

Client

Premier Service Installations

Market sector

Luxury Domestic Build