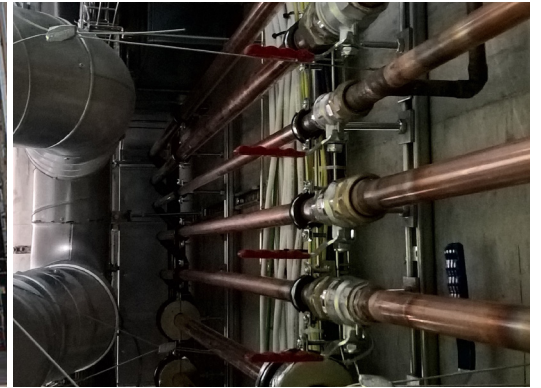


250 City Road London



250 City Road in London is currently being transformed into a high-density, low energy residential community.

Project Profile

Comprising of two residential towers of 42 and 36 stories, the development will include 995 homes and a 190-room hotel. In addition, the triangular shaped site at 250 City Road will be home to a state-of-the-art-gym, rooftop fitness terrace and luxurious swimming pool and spa.

With apartments priced over £2m The Berkley Group wanted to ensure a high-end quality build. To deliver the buildings domestic heating and hot and cold water services throughout, Peglers' Solder Ring fittings were chosen due to their proven track record. During the manufacture of these precision-made fittings, a ring of high quality lead-free solder is positioned in each capillary socket. When heat is applied, the solder is released into the gap between the tube and the fitting, resulting in a totally sound joint without the need for end feed additional solder. The original solder fittings provided the Berkley Group with a reliable and cost effective installation offering a 25 year guarantee.

Location
London

Applications
Domestic heating and cooling
Hot and cold water services

Product used
Yorkshire Solder Ring Fittings

Client
Berkley Group

Market sector
Luxury Domestic Build